

GYPSUM WALLBOARD

INSULATION WITH 4 MIL VAPOR BARRIER

CUT TOP OF INSULATION AT 45 DEGREE ANGLE

SEE ENLARGED DETAIL BELOW

3-1/2" MIN. CONC. SLAB ON 4" GRAVEL BASE ON 6 MIL VAPOR BARRIER

FINISH FLOOR

1" RIGID INSULATION (R-4.5 MINIMUM) RCO FIGURE R403.3.1

8" CONC. BLOCK

TOP OF FOOTING

SIDING

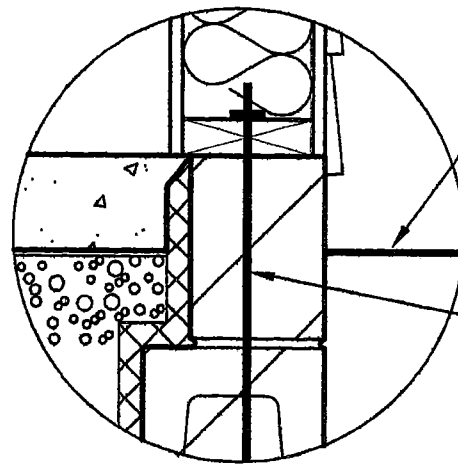
SHEATHING 602.10

2X STUD WALL Table 602.3(5)

2X TREATED PLATE IF LESS THAN 8" FROM GRADE 317.1(2)

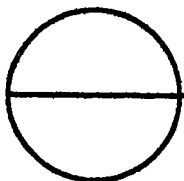
6" CONC. BLOCK

3'-0"



FINAL GRADE: SLOPE 6" IN 10' RCO SECTION 401.3

ANCHOR BOLTS PER RCO 403.1.6



# FOUNDATION WALL AT BASEMENT WALK OUT

SCALE: 3/4" = 1'-0"