



(311.7.1) STAIR WIDTH: STAIRWAYS SHALL BE NOT LESS THAN 36 INCHES IN CLEAR WIDTH AT ALL POINTS ABOVE THE PERMITTED HANDRAIL HEIGHT AND BELOW THE REQUIRED HEADROOM HEIGHT. THE CLEAR WIDTH OF STAIRWAYS AT AND BELOW THE HANDRAIL HEIGHT, INCLUDING TREADS AND LANDINGS, SHALL BE NOT LESS THAN 31-1/2 INCHES WHERE A HANDRAIL IS INSTALLED ON ONE SIDE AND 27 INCHES WHERE HANDRAILS ARE INSTALLED ON BOTH SIDES.

(311.7.2) HEADROOM: THE HEADROOM IN STAIRWAYS SHALL BE NOT LESS THAN 6 FEET 8 INCHES MEASURED VERTICALLY FROM THE SLOPED LINE ADJOINING THE TREAD NOSING OR FROM THE FLOOR SURFACE OF THE LANDING OR PLATFORM ON THAT PORTION OF THE STAIRWAY.

(311.7.5.1) RISER HEIGHT: THE MAXIMUM RISER HEIGHT SHALL BE 8-1/4 INCHES. THE GREATEST REISER HEIGHT WITHIN A FLIGHT OF STAIS SHALL NOT EXCEED THE SMALLEST BY MORE THAN 3/8 INCH.

(311.7.5.2) TREAD DEPTH: THE MINIMUM TREAD DEPTH SHALL BE 9 INCHES. THE GREATEST TREAD DEPTH WITHIN A FLIGHT OF STAIRS SHALL NO EXCEED THE SMALLEST BY MORE THAN 3/8 INCH.

(311.7.7.8) HANDRAILS: HANDRAILS SHALL BE PROVIDED ON AT LEAST ONE SIDE OF EACH CONTINUOUS RUN OF TREADS OR FLIGHT WITH FOUR OR MORE RISERS.

(311.7.8.1) HANDRAIL HEIGHT: HANDRAIL HEIGHT SHALL NOT BE MORE THAN 34 INCHES AND NOT BE MORE THAN 38 INCHES. HANDRAILS SHALL BE EITHER A TYPE I OR A TYPE II CONFIGURATION.

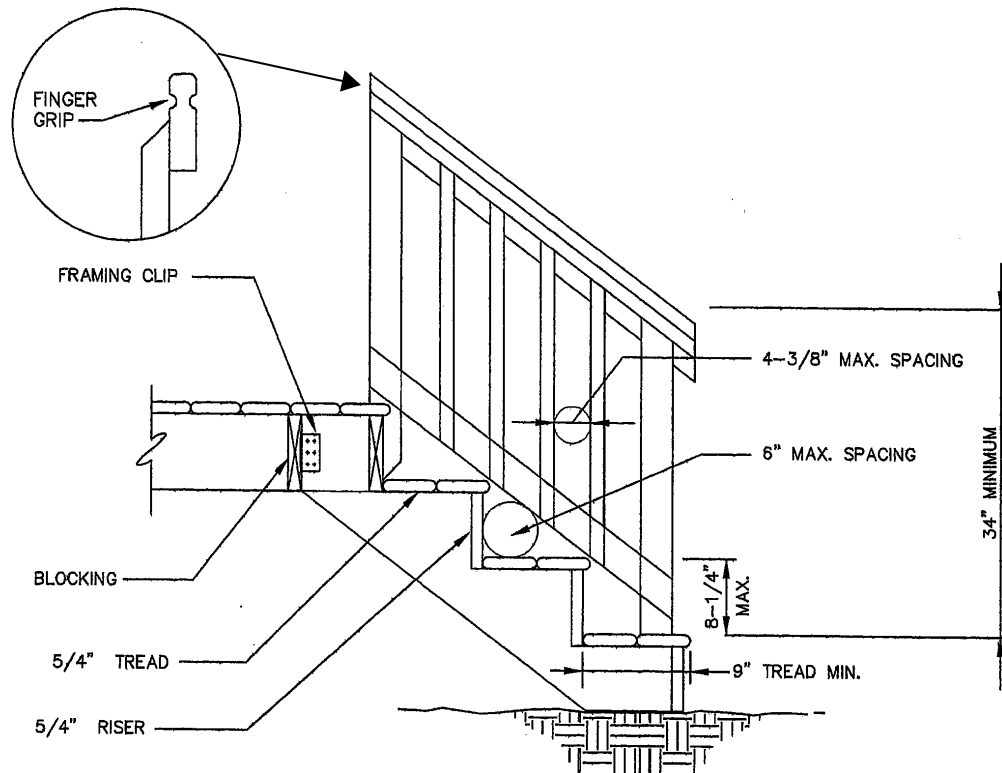
(311.7.8.5) GRIP SIZE:  
 TYPE I: HANDRAILS WITH A CIRCULAR CROSS SECTION SHALL HAVE AN OUTSIDE DIAMETER AT LEAST 1-1/4 INCHES AND NOT GREATER THAN 2 INCHES. IF THE HANDRAIL IS NOT CIRCULAR, IT SHALL HAVE A PERIMETER OF NOT LESS THAN 4 INCHES AND NOT GRATER THAN 6-1/4 INCHES WITH A MAXIMUM CROSS SECTION OF 2-1/4 INCHES.

TYPE II: HANDRAILS WITH PERIMETER SECTION WITH AN OUTSIDE DIAMETER GREATER THAN 6-1/4 INCHES SHALL PROVIDE A GRASPABLE FINGER RECESS AREA ON BOTH SIDES OF THE PROFILE. THIS RECESS AREA SHALL BE A MINIMUM OF 5.16 INCHES IN DEPTH. THE MINIMUM WIDTH OF THE HANDRAIL ABOVE THE RECESS SHALL BE 1-1/4 INCHES TO A MAXIMUM OF 203/4 INCHES. THE EDGES SHALL HAVE A MINIMUM RADIUS OF .01 INCHES.

(311.7.8.4) CONTINUITY. HANDRAILS ENDS SHALL BE RETURNED OR SHALL TERMINATE IN TO NEWEL POSTS OR SAFETY TERMINALS.

(312.1.1) GUARDS REQUIRED: OPEN SIDES OF STAIRS WITH A TOTAL RISE OF 30 INCHES OR MORE ABOVE THE FLOOR OR GRADE BELOWSHALL HAVE GUARDS NOT LESS THAN 34 INCHES IN HEIGHT MEASURED VERTICALLY FROM THE NOSING OF THE TREAD.

(312.1.3) GUARD OPENING LIMTATION: EXCEPT #2 OPENINGS FOR REQUIRED GUARDS ON THE SIDES OF STAIR TREADS SHALL NOT ALLOW A SPHERE 4-3/8 INCHES TO PASS THROUGH. NOTE: THIS SPACING IS FOR STAIRS ONLY.



# STAIR DETAIL